











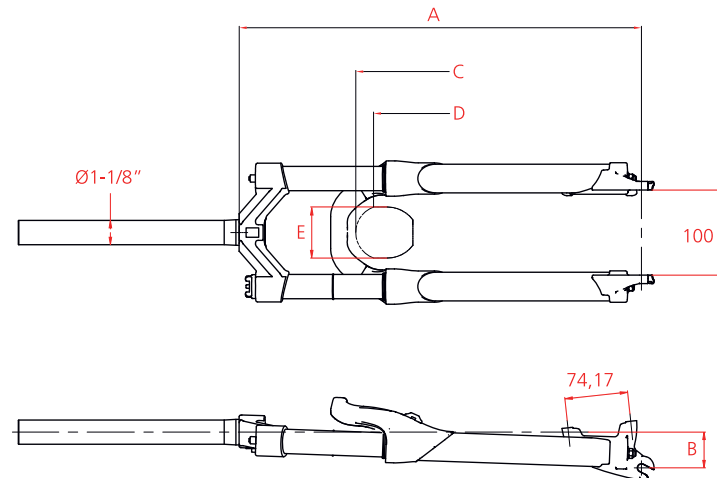
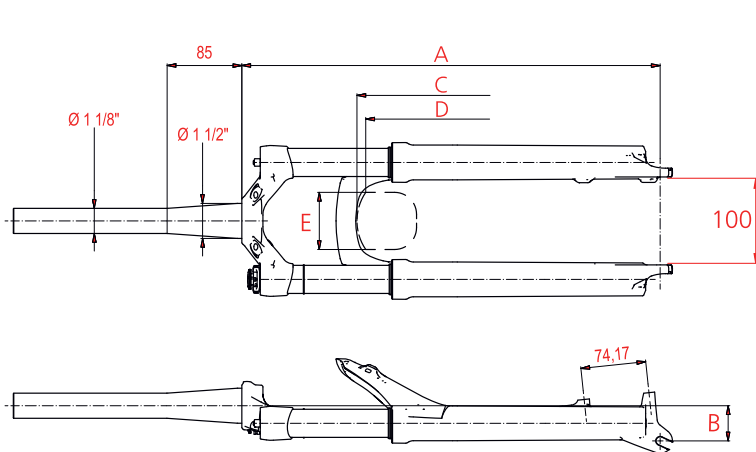
# TECH SPECS FORKS

Model	Weight [g]	Travel	Dropout	Color dropout / Fork slider	Material forks slider	Spring	Damping	Remote	Diameter stanchions	Crown	Diameter steerer	Material steerer
		100 mm										
		120 mm										
		140 mm										
		150 mm										
		9 mm										
		15 mm										
		W = White (RAL 9010)										
		S = Black										
		E = Grey										
		R = Red (RAL 3020)										
		 Hobson box magnesium										
		 Hollow arch carbon UD-finish										
		 ABS										
		 SS = Single shot										
		 TS = Twin shot										
		 LC = Launch control II										
		Yes										
		No										
		ø 28.6 mm										
		ø 32 mm										
		A = Aluminium black painted										
		 C = Carbon UD-finish										
		ø 1 1/8										
		ø 1 1/2										
		A = Aluminium (black anodize)										
		 C = Carbon UD-finish										
XMM 120	1650	●	●	●	●	●	●	●	●	●	●	●
XMM 120	1650	●	●	●	●	●	●	●	●	●	●	●
XMM 120	1557	●	●	●	●	●	●	●	●	●	●	●
XMM 120	1745	●	●	●	●	●	●	●	●	●	●	●
XMM 140	1650	●	●	●	●	●	●	●	●	●	●	●
XMM 140	1650	●	●	●	●	●	●	●	●	●	●	●
XMM 140	1557	●	●	●	●	●	●	●	●	●	●	●
XMM 140	1745	●	●	●	●	●	●	●	●	●	●	●
XMM 150	1660	●	●	●	●	●	●	●	●	●	●	●
XMM 150	1660	●	●	●	●	●	●	●	●	●	●	●
XMM 150	1565	●	●	●	●	●	●	●	●	●	●	●
XMM 150	1755	●	●	●	●	●	●	●	●	●	●	●
XMC 120	1570	●	●	●	●	●	●	●	●	●	●	●
XMC 140	1570	●	●	●	●	●	●	●	●	●	●	●
XMC 150	1570	●	●	●	●	●	●	●	●	●	●	●
EXM 150	1675	●	●	●	●	●	●	●	●	●	●	●
EXM 150	1770	●	●	●	●	●	●	●	●	●	●	●
EXM 150	1770	●	●	●	●	●	●	●	●	●	●	●
EXM 150	1657	●	●	●	●	●	●	●	●	●	●	●
EXC 150	1575	●	●	●	●	●	●	●	●	●	●	●

● = Serie ○ = Option

# TECH SPECS FORKS

Model	Hose guide	Remote lockout	Ride height (A) ± 3 mm	Fork offset (B)	Tire diameter max. (C)	Max. diameter (D) at tire width (E)	Max. tire width (E)	Recommended riders weight max. [kg]	Disc mount
XMM 100 29 XMM 120 29	integrated	optional	503/523 mm	45 mm	756 mm	733 mm	62 mm	110 kg	PM6" max. 210 mm
XRC 100	integrated	optional	475 mm	41 mm	686 mm	662 mm	59 mm	95 kg	PM6" max.185 mm
XRC 100 Race	integrated	integrated	475 mm	41 mm	686 mm	662 mm	59 mm	95 kg	PM6" max.185 mm
XRM 100	integrated	optional	475 mm	40 mm	690 mm	670 mm	65 mm	110 kg	PM6" max. 210 mm
XRR 445 XRR 470	integrated	–	445 mm 470 mm	41 mm 42 mm	690 mm 745 mm	670 mm 678 mm	65 mm	95 kg	PM6" max.185 mm
XMM 120 XMM 140 XMM 150	integrated	optional	495 mm 515 mm 525 mm	40 mm	690 mm	670 mm	65 mm	110 kg	PM6" max. 210 mm
XMC 120 XMC 140 XMC 150	integrated	integrated	495 mm 515 mm 525 mm	40 mm	690 mm	670 mm	65 mm	110 kg	PM6" max. 210 mm
EXM 150	integrated	–	525 mm	40 mm	690 mm	670 mm	65 mm	110 kg	PM6" max. 210 mm
EXC 150	integrated	–	525 mm	40 mm	690 mm	670 mm	65 mm	110 kg	PM6" max. 210 mm



# TECH SPECS FORKS

<i>Model</i>	<i>Fork length [mm]</i>	<i>Weight [g]</i>	<i>Steertube / Crown</i>	<i>Stanchions</i>	<i>Finish carbon</i>	<i>Dropouts</i>	<i>Steerer expander</i>
XRR 445	445	585	1 1/8" Monocoque carbon steerer/ crown with rib technology	High-modulus carbonfiber, bonded with carbon spiggot	Carbon UD with silver grafics	Magnesium 9 mm black with integrated 6" PM disc mount for max 185 mm rotors	included
XRR 470	470	595	1 1/8" Monocoque carbon steerer/ crown with rib technology	High-modulus carbonfiber, bonded with carbon spiggot	Carbon UD with silver grafics	Magnesium 9 mm black with integrated 6" PM disc mount for max 185 mm rotors	included